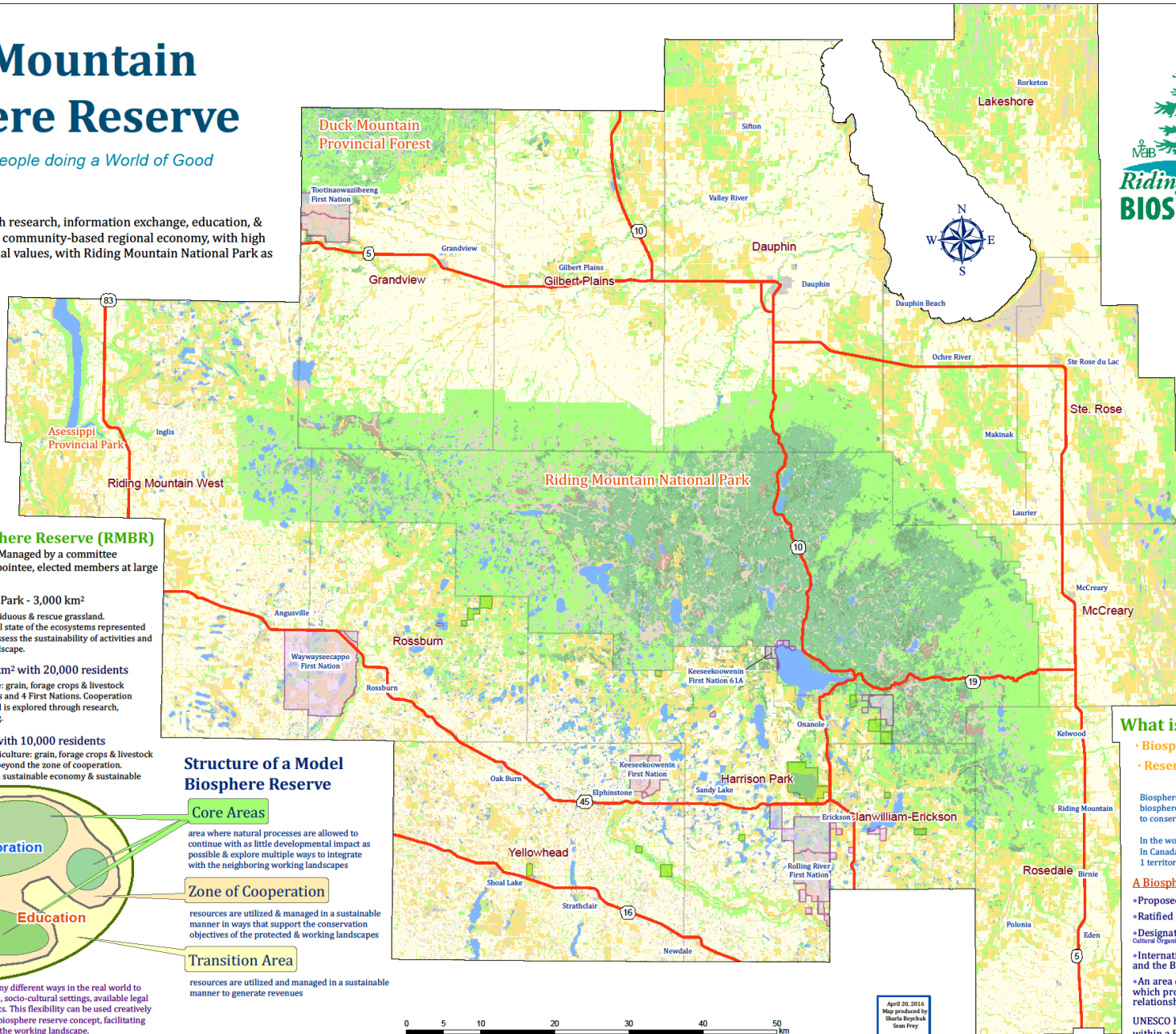


# Riding Mountain Biosphere Reserve

*A World of Good People doing a World of Good*

## Mission:

To foster & encourage, through research, information exchange, education, & communication, a sustainable community-based regional economy, with high biodiversity, landscape, & social values, with Riding Mountain National Park as a key component.



## Riding Mountain Biosphere Reserve (RMBR)

Designated in 1986 - 14,600 km<sup>2</sup> Managed by a committee composed of municipal council appointee, elected members at large and First Nations representatives

### Core Riding Mountain National Park - 3,000 km<sup>2</sup>

Consists of mixedwood forest, eastern deciduous & rescue grassland. It serves as a reference point of the natural state of the ecosystems represented by the Biosphere Reserve and is used to assess the sustainability of activities and environmental quality in the working landscape.

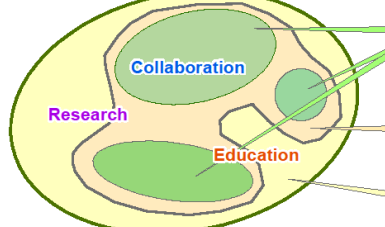
### Zone of Cooperation 4,700 km<sup>2</sup> with 20,000 residents

The area largely developed for agriculture: grain, forage crops & livestock production involves 12 municipal councils and 4 First Nations. Cooperation is essential to achieving sustainability and is explored through research, education and community based planning.

### Transition Area 6,900 km<sup>2</sup> with 10,000 residents

The area is also largely developed for agriculture: grain, forage crops & livestock production where people work together beyond the zone of cooperation. The RMBR assists in the development of a sustainable economy & sustainable community structure.

## Structure of a Model Biosphere Reserve



### Core Areas

area where natural processes are allowed to continue with as little developmental impact as possible & explore multiple ways to integrate with the neighboring working landscapes

### Zone of Cooperation

resources are utilized & managed in a sustainable manner in ways that support the conservation objectives of the protected & working landscapes

### Transition Area

resources are utilized and managed in a sustainable manner to generate revenues

This zonation scheme is applied in many different ways in the real world to accommodate geographical conditions, socio-cultural settings, available legal protection measures & local constraints. This flexibility can be used creatively & is one of the strongest points of the biosphere reserve concept, facilitating the integration of protected areas and the working landscape.

## Legend

- Highways
- First Nations Reserves
- Wildlife Management Areas
- Cropland
- Deciduous Forest
- Water
- Grassland/Rangeland
- Mixedwood Forest
- Marsh
- Bog
- Coniferous Forest
- Towns/Roads

## What is a Biosphere Reserve?

- **Biosphere** - sphere of life
- **Reserve** - an important area of the world recognized for its special qualities

Biosphere Reserves highlight special areas within the biosphere where people demonstrate better approaches to conservation & sustainable resource use.

In the world: 669 Biosphere Reserves in 120 Countries  
In Canada: 18 Biosphere Reserves in 8 provinces and 1 territory

### A Biosphere Reserve is:

- Proposed by its residents
- Ratified by a national committee
- Designated by UNESCO (United Nations Educational, Scientific & Cultural Organizations)
- Internationally recognized under UNESCO's Man and the Biosphere (MAB)
- An area of terrestrial & coastal marine ecosystems which promote & demonstrate a balanced relationship between people & nature

UNESCO has no authority or regulatory powers within a Biosphere Reserve.



April 20, 2016  
Map produced by  
Sharla Boychuk  
Sean Frey