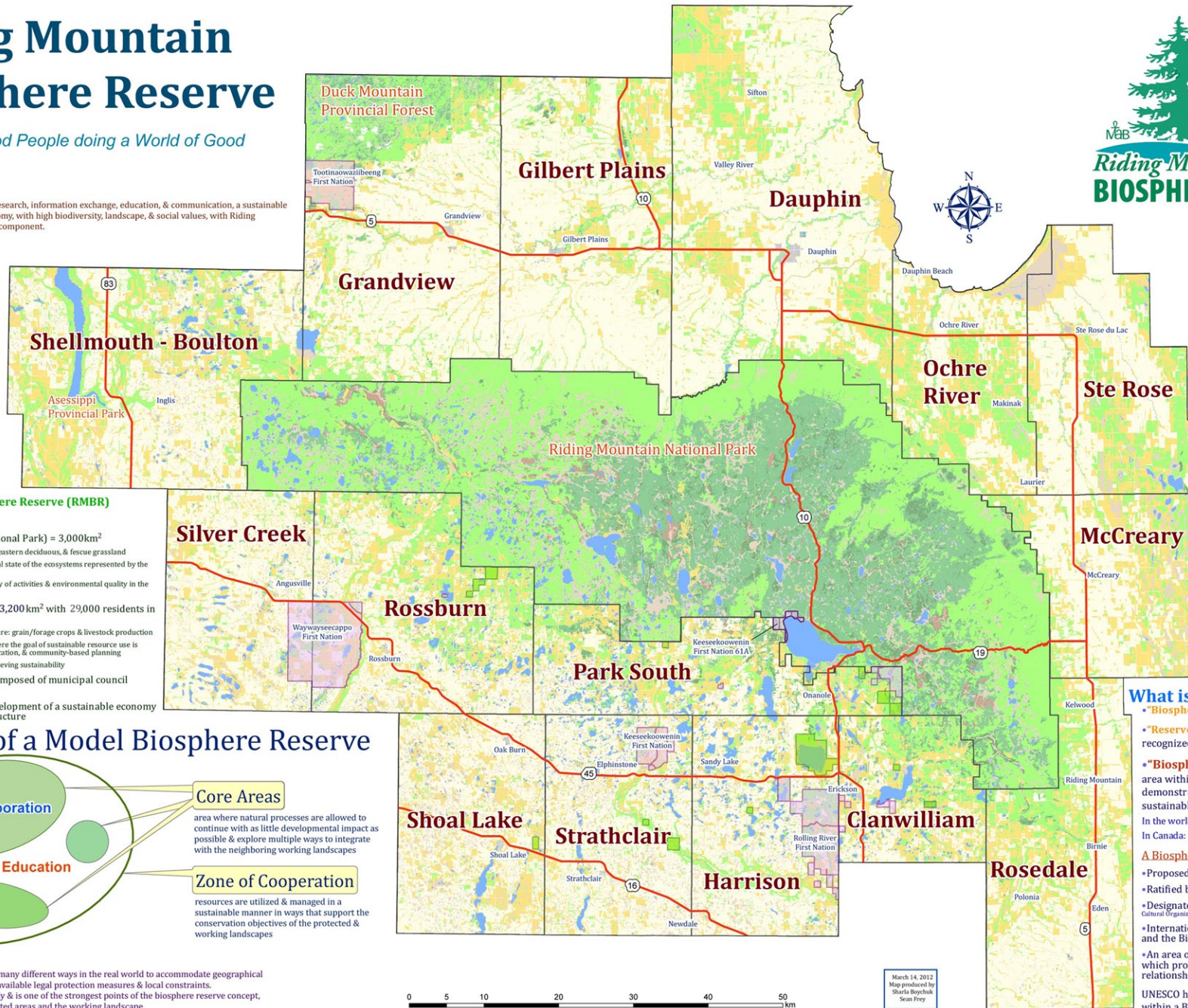


Riding Mountain Biosphere Reserve

A World of Good People doing a World of Good

Mission:

To foster & encourage, through research, information exchange, education, & communication, a sustainable community-based regional economy, with high biodiversity, landscape, & social values, with Riding Mountain National Park as a key component.



Find us Online!
www.rmbr.ca



www.facebook.com/RMBiosphere
www.twitter.com/RM_Biosphere

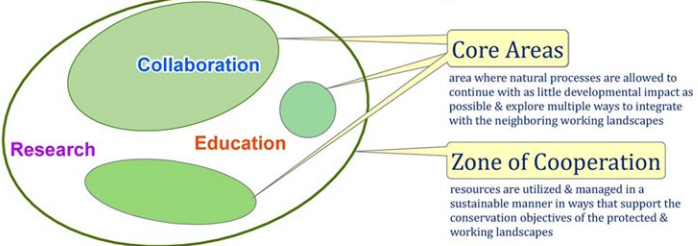
Legend

- Highways
- First Nations Reserves
- Wildlife Management Areas
- Cropland
- Deciduous Forest
- Water
- Grassland/Rangeland
- Mixedwood Forest
- Marsh
- Bog
- Coniferous Forest
- Towns/Roads

What is a Biosphere Reserve?

- "Biosphere" – 'sphere of life'
- "Reserve" – an important area of the world recognized for its special qualities
- "Biosphere Reserve" – highlights a special area within the biosphere where people demonstrate better approaches to conservation & sustainable resource use
- In the world: 584 Biosphere Reserves in 114 Countries
 In Canada: 16 Biosphere Reserves in 8 provinces
- A Biosphere Reserve is:**
 - Proposed by its residents
 - Ratified by a national committee
 - Designated by UNESCO (United Nations Educational, Scientific & Cultural Organization)
 - Internationally recognized under UNESCO's Man and the Biosphere (MAB)
- An area of terrestrial & coastal marine ecosystems which promote & demonstrate a balanced relationship between people & nature
- UNESCO has no authority or regulatory powers within a Biosphere Reserve.

Structure of a Model Biosphere Reserve



This zonation scheme is applied in many different ways in the real world to accommodate geographical conditions, socio-cultural settings, available legal protection measures & local constraints. This flexibility can be used creatively & is one of the strongest points of the biosphere reserve concept, facilitating the integration of protected areas and the working landscape.



March 14, 2012
 Map produced by
 Shanta Bouchnik,
 Sean Fry